

**THE COUNCIL OF THE BOROUGH OF MILTON KEYNES
(THE COUNCIL OF THE BOROUGH OF MILTON KEYNES
(CENTRAL MILTON KEYNES) (ON-STREET FREE AND LIMITED
PARKING PLACES AND WAITING RESTRICTIONS) ORDER 2002)
VARIATION ORDER 2012**

The Council of the Borough of Milton Keynes ("the Council") in exercise of its powers under Sections 45, 46, 49 and 53 of the Road Traffic Regulation Act 1984 ("the Act of 1984") and of all other enabling powers, and after consultation with the chief officer of police in accordance with Part III of Schedule 9 to the Act of 1984, hereby makes the following Order:-

PART 1

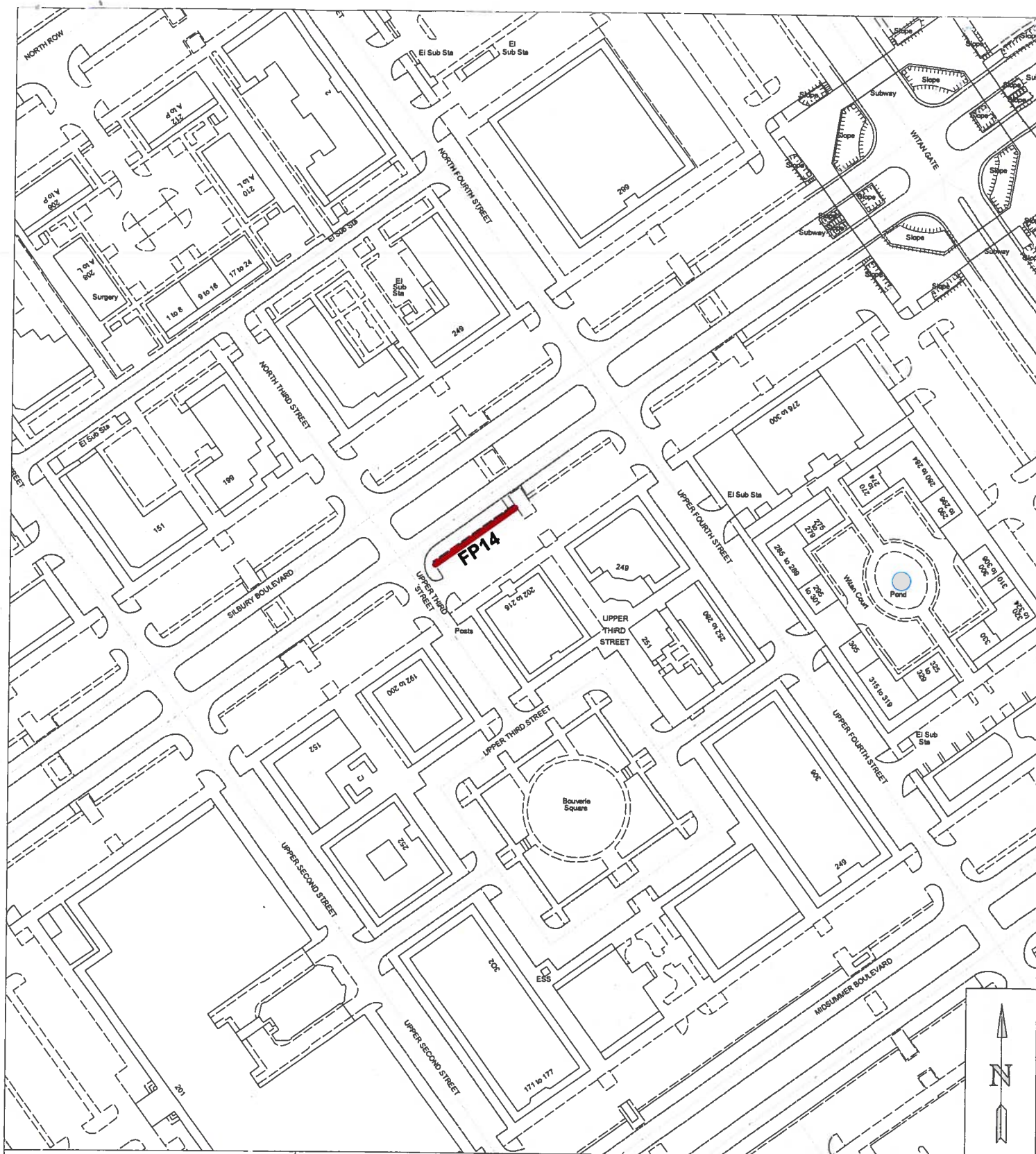
IMPLEMENTATION AND CITATION

1. This Order shall come into operation on 10 May 2012 and may be cited as "The Council of the Borough of Milton Keynes (The Council of the Borough of Milton Keynes (Central Milton Keynes) (On-Street Free and Limited Parking Places and Waiting Restrictions) Order 2002) Variation Order 2012".
2. Any plans annexed to this Order identify the lengths of road subject to this Order, provided that where there is any inconsistency between the plans and the Articles it is the wording of the Articles which shall prevail.
3. Any plans annexed to this Order are hereby annexed to The Council of the Borough of Milton Keynes (Central Milton Keynes) (On-Street Free and Limited Parking Places and Waiting Restrictions) Order 2002 and form part of the Order.
4. Any reference in this Order to any enactment shall be construed as a reference to that enactment as amended by any subsequent enactment.


PART 2

VARIATIONS

5. The Council of the Borough of Milton Keynes (Central Milton Keynes) (On-Street Free and Limited Parking Places and Waiting Restrictions) Order 2002 ("The Principal Order") is varied as provided by the following provisions of this Order:-
6. The following items are inserted into Schedule 1 of The Principal Order:-



NOTES:

 Free Parking Places
2 hours limited waiting
No return within 2 hours

FP14 TRO reference
number

Map referred to in the Council of the Borough
of Milton Keynes (Central Milton Keynes)
(On-Street Free and Limited Parking Places
and Waiting Restrictions) Order 2002) Variation
Order 2012

Map 1

Not to scale

The Common Seal of the Council of the Borough
of Milton Keynes was hereunto affixed in the
presence of:



20133



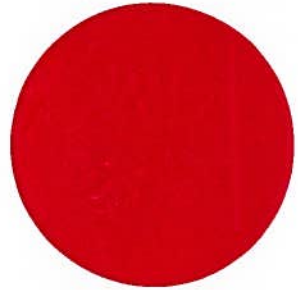
SILBURY BOULEVARD
THE SOUTH-EAST VEHICULAR ACCESSWAY – NORTH-WEST
SIDE


FP14 From Upper Third Street to the south-western side of the
porte cochere situated south-west of Upper Fourth Street

LOWER TWELFTH STREET
NORTH-EAST SIDE

FP15 From its junction with Midsummer Boulevard to the entrance
of the underground parking

THE COMMON SEAL of the **COUNCIL OF THE
BOROUGH OF MILTON KEYNES** was hereunto
affixed this 9th day of May 2012
in the presence of :-




.....
ASSISTANT DIRECTOR – LAW & GOVERNANCE

20133